

# SF Contur System / Technical Manual



- 1. Contur elements**
- 2. Technical data of groove and lens**
- 3. Mounting instructions**

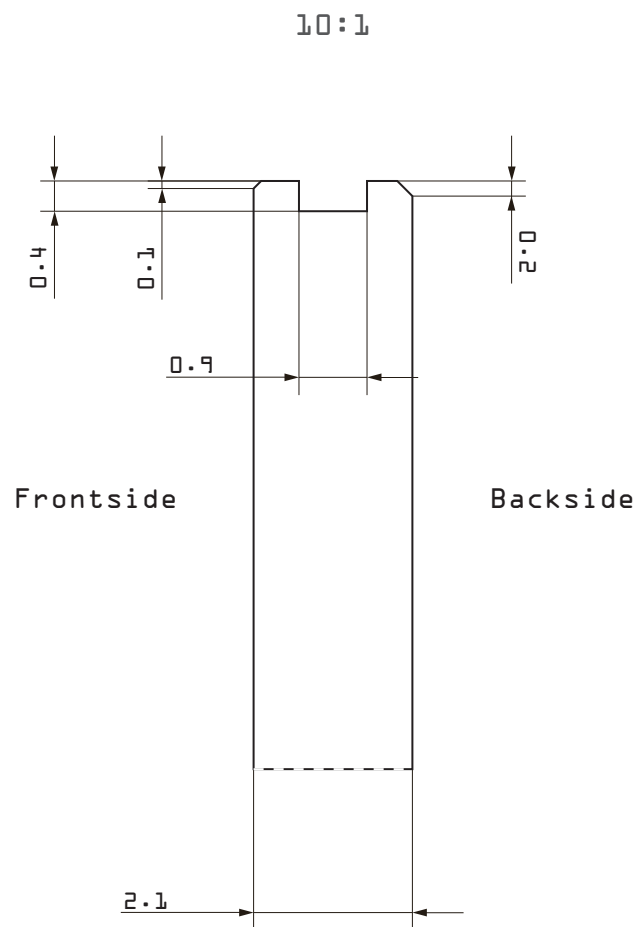
## 1. Contur elements



- ① Contur rings
- ② Lenses

## 2. Technical data of groove and lens

Example for foil 0.8 mm thickness



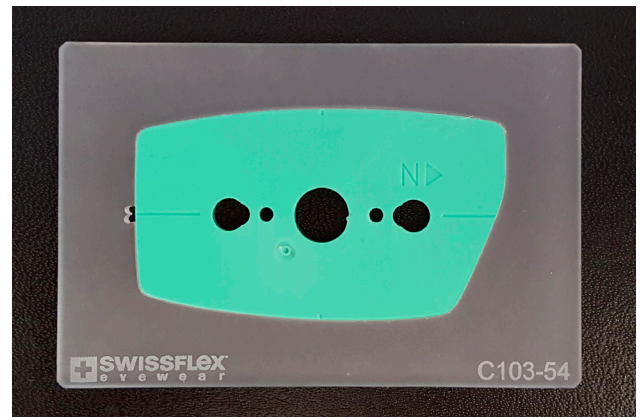
(A minimum glass thickness of 2.1 mm is recommended)

### 3. Mounting instructions

1

Preparation:

Milling and grooving the lens to the correct shape and size by using the checking device. The size and shape is correct when the lenses hold with light tension in the checking device.



2

Grooving and drilling the lenses according requirements of shape.



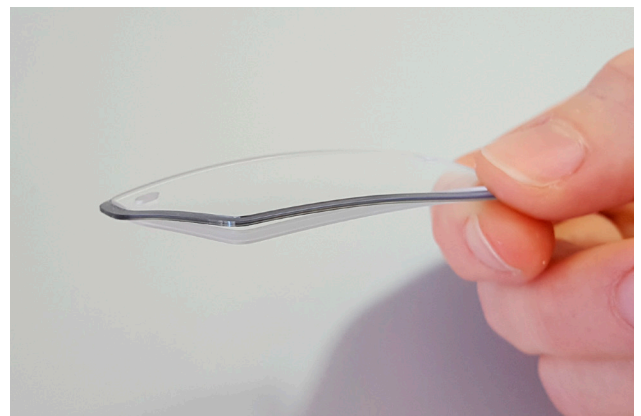
3

Inserting the Contur ring starting temporally. From the front or the back depends on the shape and the thickness of the lens.

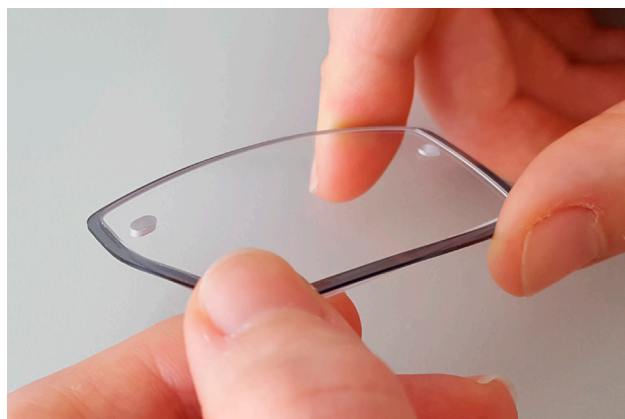


4

Inserting the Contur ring nasal in the upper part of the lens.



- 5 Lifting the Contur carefully over the lower part of the lens.



- 6 Checking the tight fit of the Contur ring on the lens. And proceeding with the mounting of the frame like usual.



- ! Caution!  
Contur ring should not get in contact with acetone.